

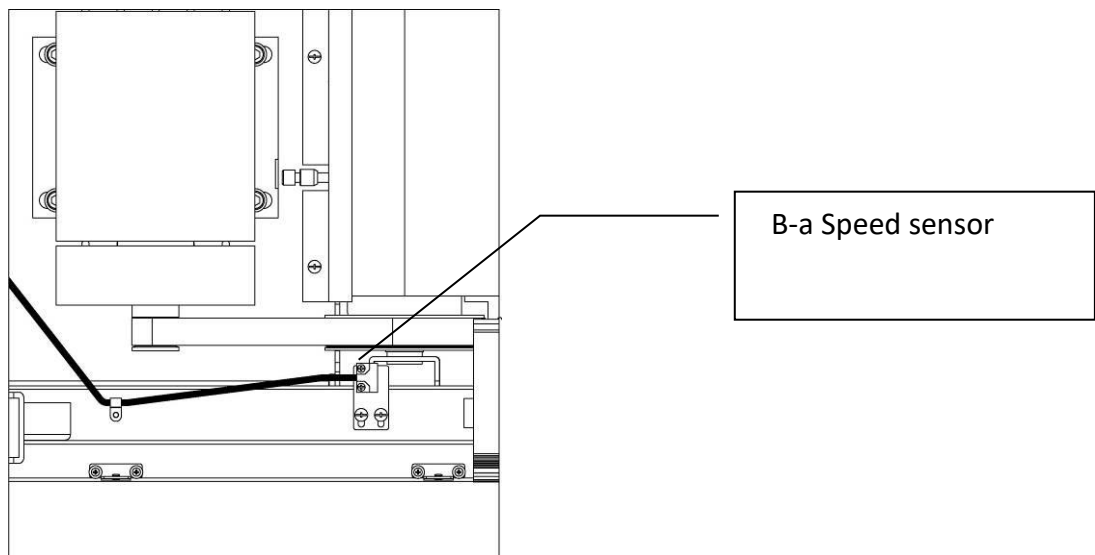
Error code and troubleshooting (Runfit87)

- ◆ If treadmill can't be started after power on (console is lightless), please proceed to check power switch and circuit breaker.
If problem still persist, please contact with authorized dealer.

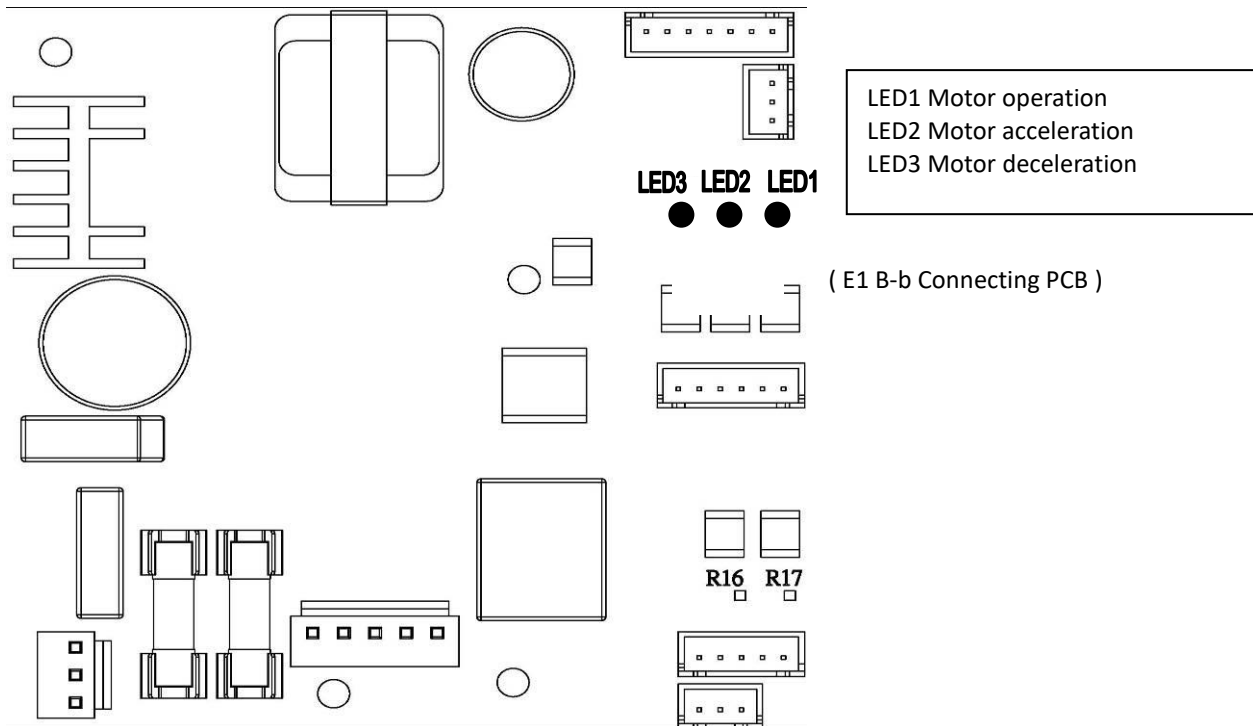
◆ E1 Motor error

The troubleshooting steps are as following.

- Switch on power of treadmill again, if treadmill runs normally, please check whether or not running belt is lubricated adequately. An inadequate lubrication may increase friction in between deck and belt to cause E1.
- Switch on power again, press QUICK START key, if treadmill runs for 3~8 seconds and automatically stops, E1 happens :
 - Speed sensor failure: please remove motor cover, check the wiring of speed sensor (see E1 B-a). If console doesn't detect speed, motor will be forced to stop to prevent casualty.



- While treadmill is in running, remove motor cover to check if the lamp on Connecting PCB is lit or not. The LED3 will be lit and LED1 will be blinking (See below E1 B-b PCB).



1. Once E1 happens, LED3 yellow lamp is lit, LED1 red lamp is constantly blinking, you need to replace Connecting PCB or inverter.
 2. Once E1 happens, LED3 yellow lamp is not lit, LED1 red lamp is not blinking, you should check the control cable between console and Connecting PCB is loosed or damaged. If control cable is properly connected, proceed to replace main console board.
- C. If both step 1 and step 2 can't solve E1, please replace motor.

◆ E6 Incline error

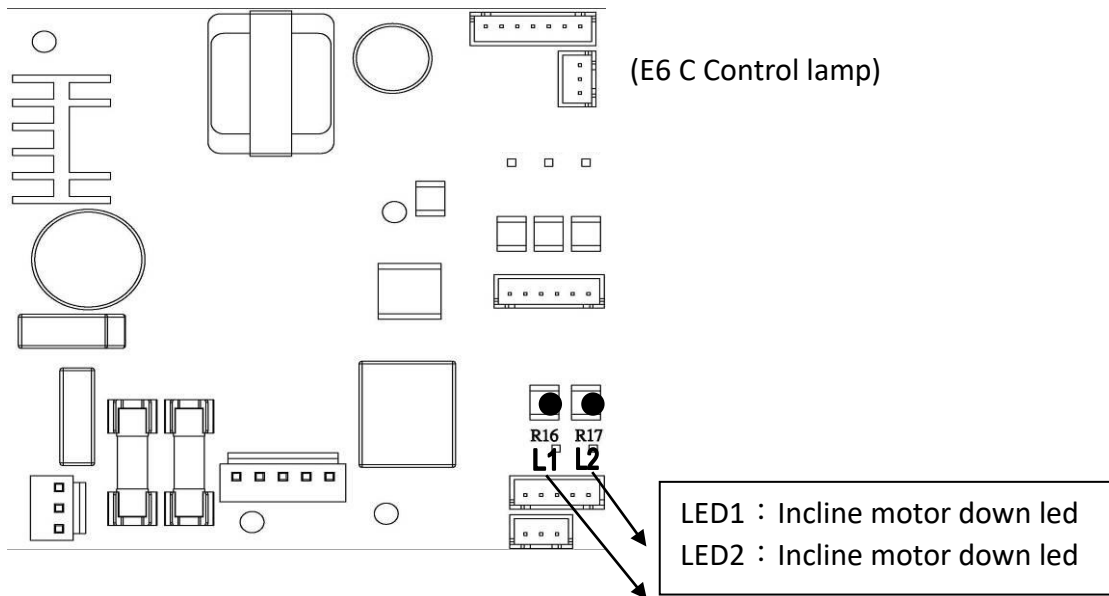
Steps are shown below.

- A. Power on treadmill, if E6 appears again, please power off and on treadmill to check if treadmill can run normally, if not, please continue step B.
- B. Mandatory to test incline motor and wiring are normal or not. Please carefully proceed to prevent connecting PCB or incline motor being damaged.
 1. When incline is at higher level, press STOP and INCLINE▼ together, for about 3~5 seconds, incline motor will be forced to descent, in the meantime, please check whether or not the incline reading on console's scrolling text comes down to 0.0 accordingly, if the said reading decreases as per incline, you can just release two keys to let incline returning to the default setting.
 2. When incline is at lower level, press STOP and INCLINE▲ together for about 3~5 seconds, incline motor will be forced to ascent, in the meantime, please check whether or not the incline reading on console's scrolling text goes up to 15 accordingly, if the ADC reading increases as incline, you can just release two keys to let incline returning to the default

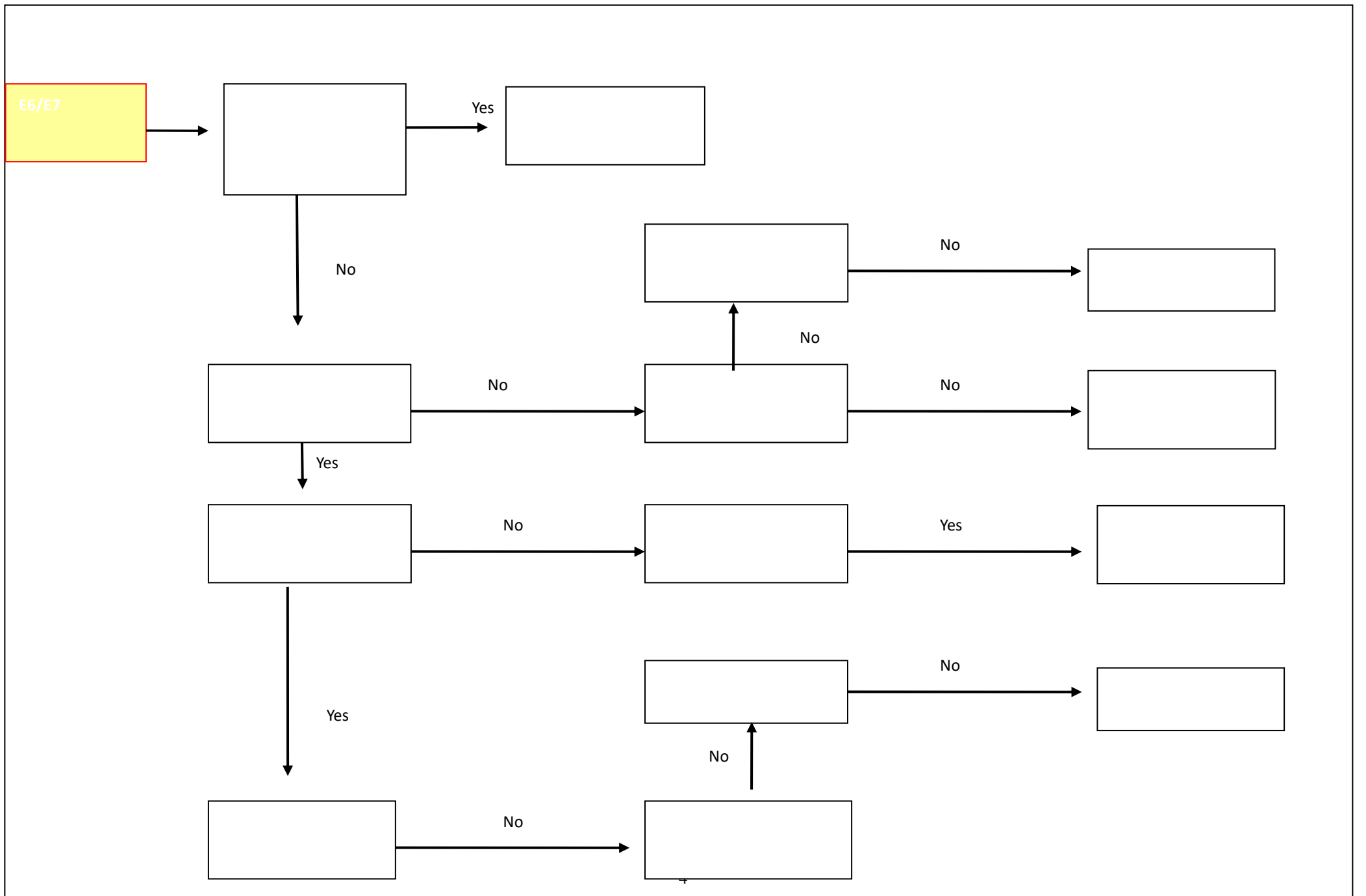
setting.

The incline can be forced to up or down by doing the above manual adjustment, however, if the incline ADC reading cannot be changed accordingly, incline motor must be replaced.

- C. When incline is out of function, you can solve the E6 by checking lamps on connecting PCB. Remove motor cover, and press INCLINE▲ key to check red led L2 will be lit or not (see E6 C Control lamp). On the contrary, press INCLINE▼, then check the orange LED L1 will be lit or not. If lamps can be lit normally, check if the incline is jammed, or replace incline motor. If lamps can't be lit normally, please also check control cable is disconnected or damaged between console and connecting PCB. If the control cable is not damaged, please replace Connecting PCB or main console board.



- D. If above steps still can't solve the problem, please contact with authorized dealer. You can also waiver the incline function in order to run treadmill, press STOP and SPEED - together for 3-5 seconds. Notice: incline can't be adjusted and would stay at the any level when error occurs.



E1

